



Wundhakensystem Sattler - Königsee

Short Description



The “Sattler” Königsee retractor system is a universally designed surgical retractor system. This system is modular in construction and can be adapted and expanded any time as desired. The selfretaining modular construction makes it efficient and optimally cost-effective to use. This can reduce operation costs so it is an investment that will soon pay for itself.

Medizintechnik Sattler GmbH

Werkstraße 9 • D-07426 Königsee/Thür., Germany

phone: +49 (0) 36738 42293 oder +49 (0) 36738 44726

fax: +49 (0) 36738 44725

mail: kontakt@medizintechnik-sattler.de

web: <http://www.medizintechnik-sattler.de>

Rev: 20100108

General Benefits

Sattler Surgical Retractor Systems – Benefits

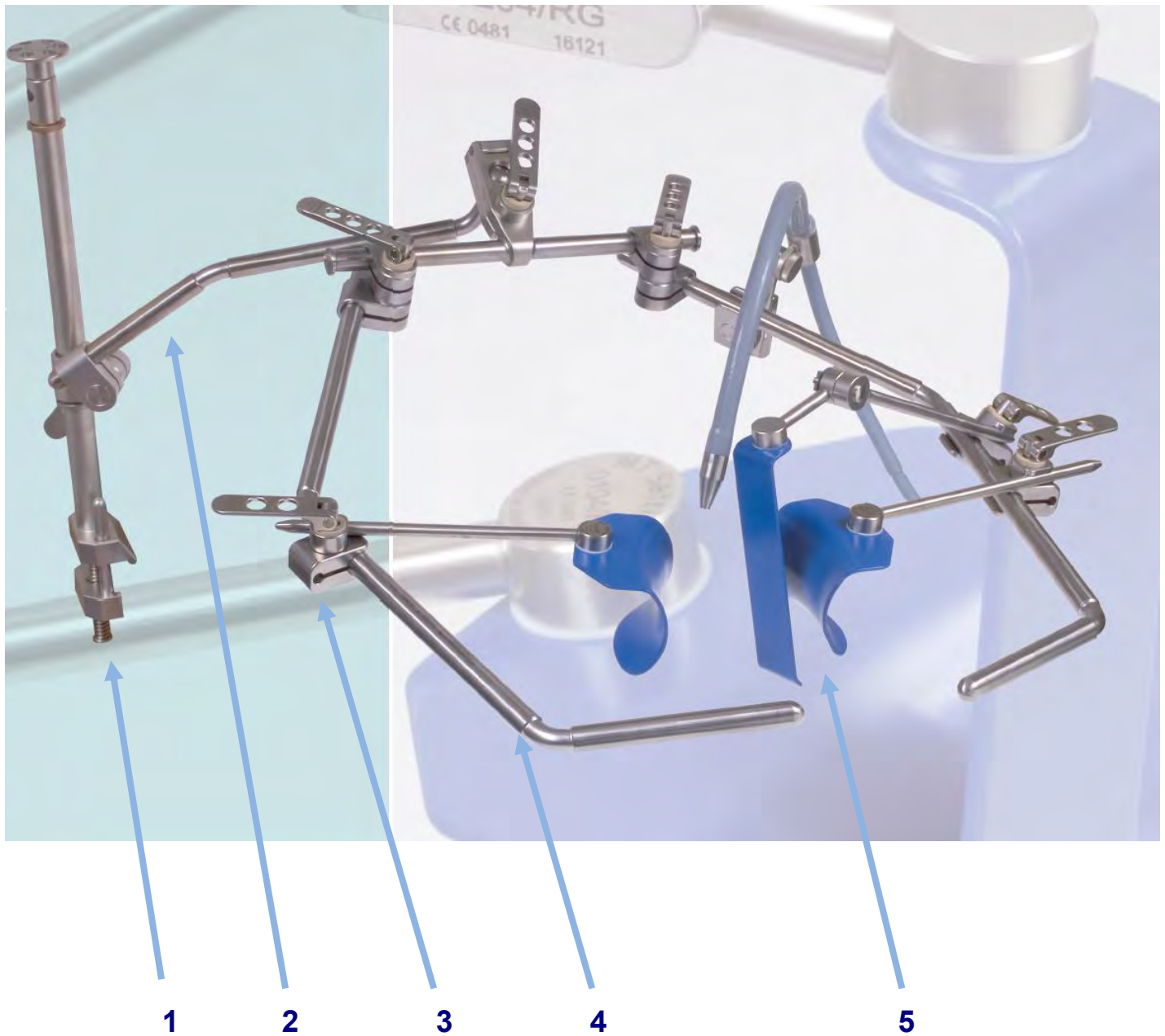
Main Points:

- ❖ 100% Made in Germany
- ❖ Special Items on customer request, e.g XL-blades, special support arms
- ❖ Patented Clamp (01130-07) Technology, very flat, light weight, stable
- ❖ Articulating Bladeholders for a special situs adjustment in the deep
- ❖ Plastic Coated Retractor Blades (non-dazzling)
- ❖ Very good reputation, eg. Charite Berlin, University Hospital Jena, University Hospital Frankfurt Main, Hospital „Rechts der Isar“ Munich etc.
- ❖ Very stable system, especially for obese people
- ❖ Quick and easy to install
- ❖ Optimisation of operation costs

Miscellaneous

- ❖ No extensive training
- ❖ Practice-oriented, simple, and quick configuration
- ❖ Ideal for the most surgical areas
- ❖ Good Movement opportunities, maximum of space
- ❖ Lightweight Components
- ❖ Multiy-functionality, modular retractor systems
- ❖ Electrical safety
- ❖ Easy Cleaning
- ❖ Certified in accordance with DIN EN ISO 13485:2008, Guideline 93/42 EWG (CE0481)
- ❖ Developed with high professional surgeons
- ❖ Compatibility between retractors

Short Manual



Parts of a Sattler Retractor – abdominal

1. Sterile Field Post with one clamp 20/14 mm – article: 01100-52 sim 01100-28
2. Support arm asymmetric with 2 clamps 14/14 mm – article: 01115-14
3. Excentric Clamp 14/8 mm for blade holder – article: 01130-07
4. Support arm (couple) for retractor blades – article: 01120-14
5. Retractor blades

Parts of a Sattler Retractor – abdominal

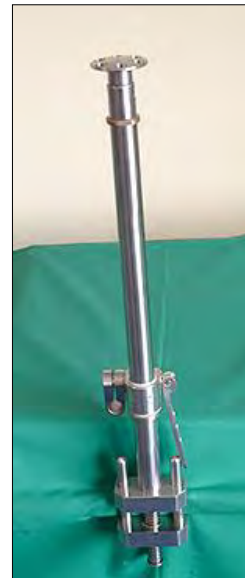
Sterile Field Post

article: 01100-52

Sterile Field Post with one clamp 20/14 mm

article: 01100-28

Sterile Field Post with one clamp 25/14 mm



Installation Sterile Field Post

- available for any types of OP tables
- suitable for all disciplines

Support arm

article: 01115-14 Support arm asymmetric with 2 clamps 14/14 mm



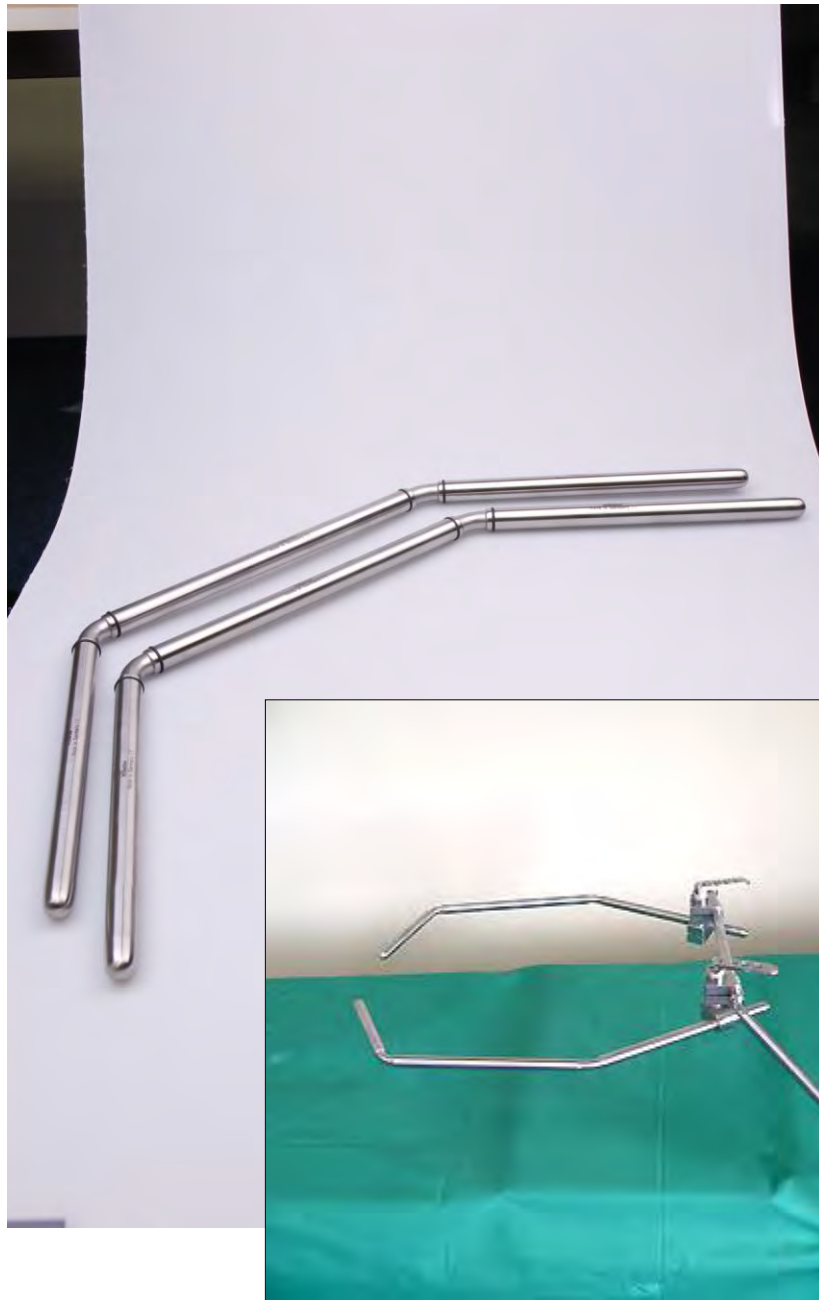
alternative

article: 01115-30 Support Arm with 2 clamps 14/14 mm and Ball System for Hip THR/Knee/abdominal



Frame Arms

article: 01120-14 Support arm (couple) for retractor blades



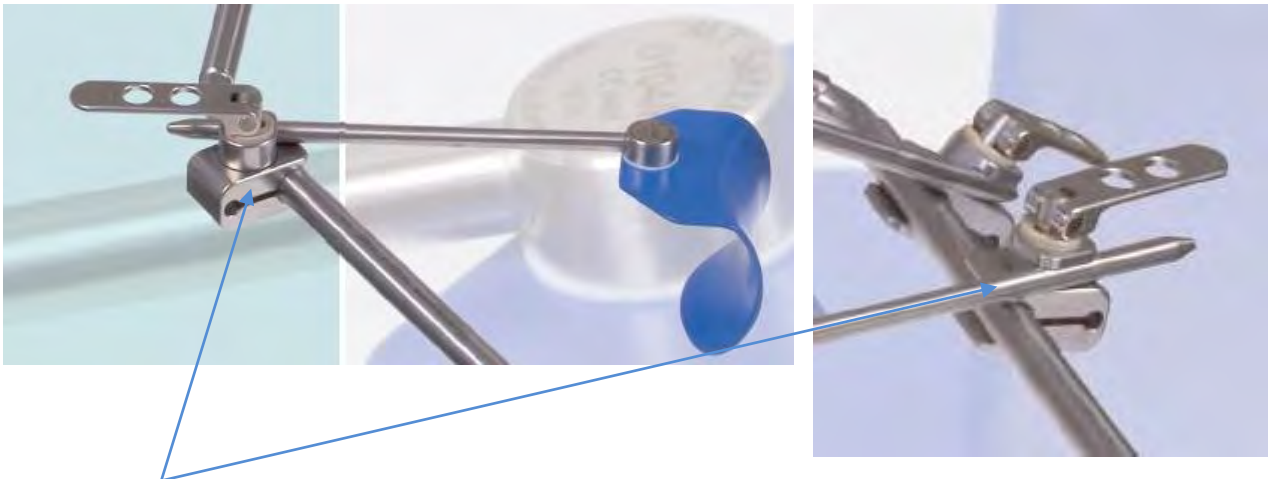
Available in other dimensions, sizings, with other angles on your request! We can also provide you a ring system, if required.

Clamp 14/8

article: 01130-07 Excentric Clamp 14/8 mm for blade holder



Very flat at the bottom, light weight, stable! You can install the clamp on the frame arms and alternative on the support arms.



Easy to install – click and clamp system. All clamps are moveable.

Retractor blades

Over 300 blades in our standard portfolio cp. Price list

Benefits:

- Special retractor blades on customer request, e.g XL-blades, forms e.g.
- Articulating Bladeholders for a special situs adjustment in the deep
- Plastic Coated Retractor Blades (non-dazzling)

All our blades have a attached bladeholder! The lenght of the bladeholder is normally 240 mm. You can have other sizes on request

We can offer different variations to you.

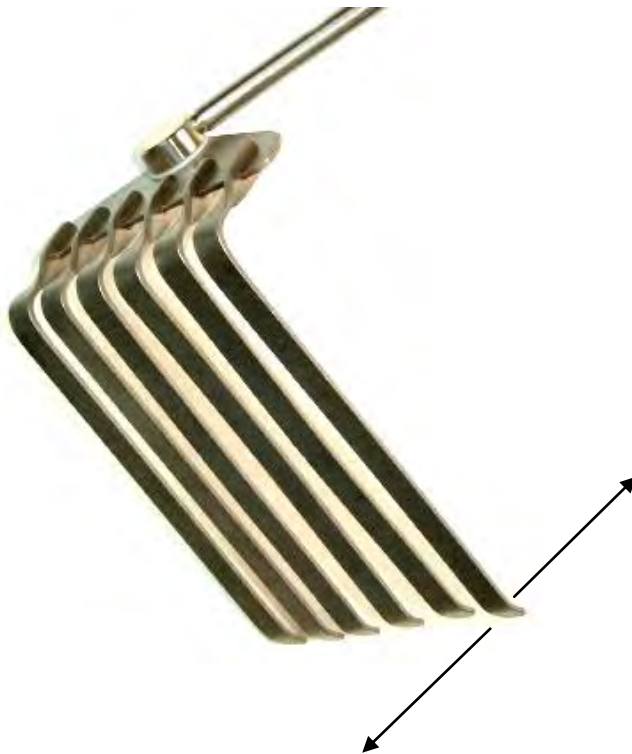
- Retractor Blade, sainless steel



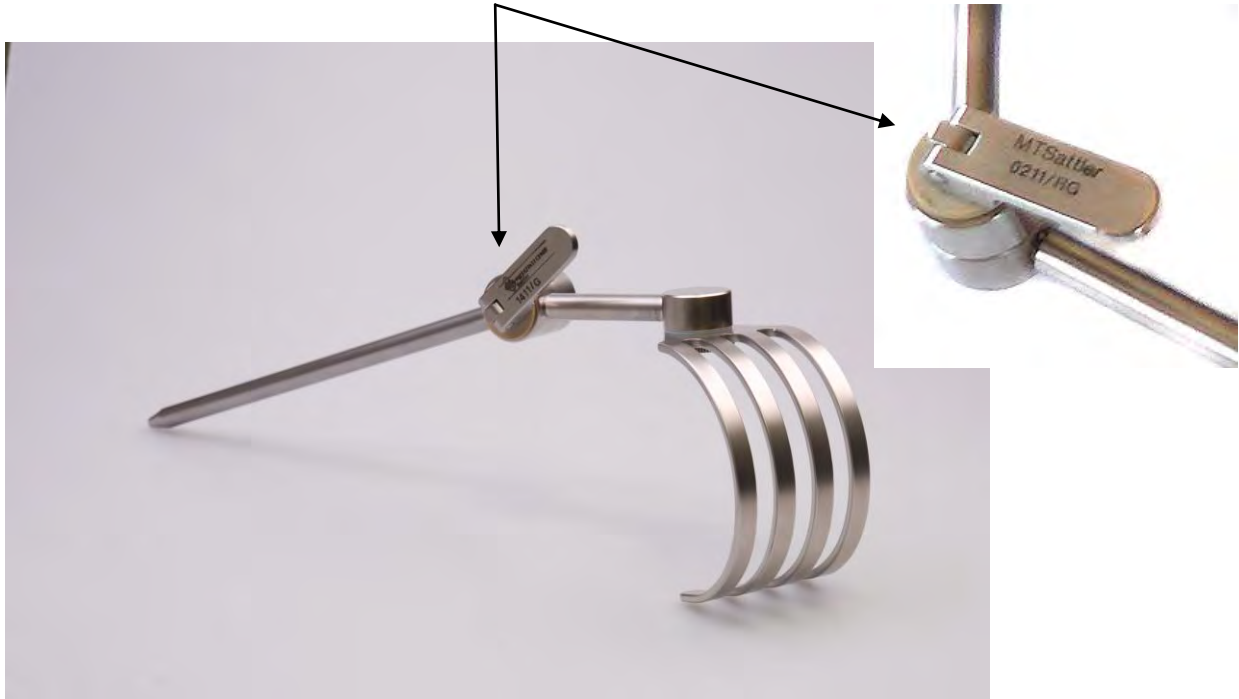
- Plastic Coated Retractor Blades (non-dazzling)



- Malleable Blades

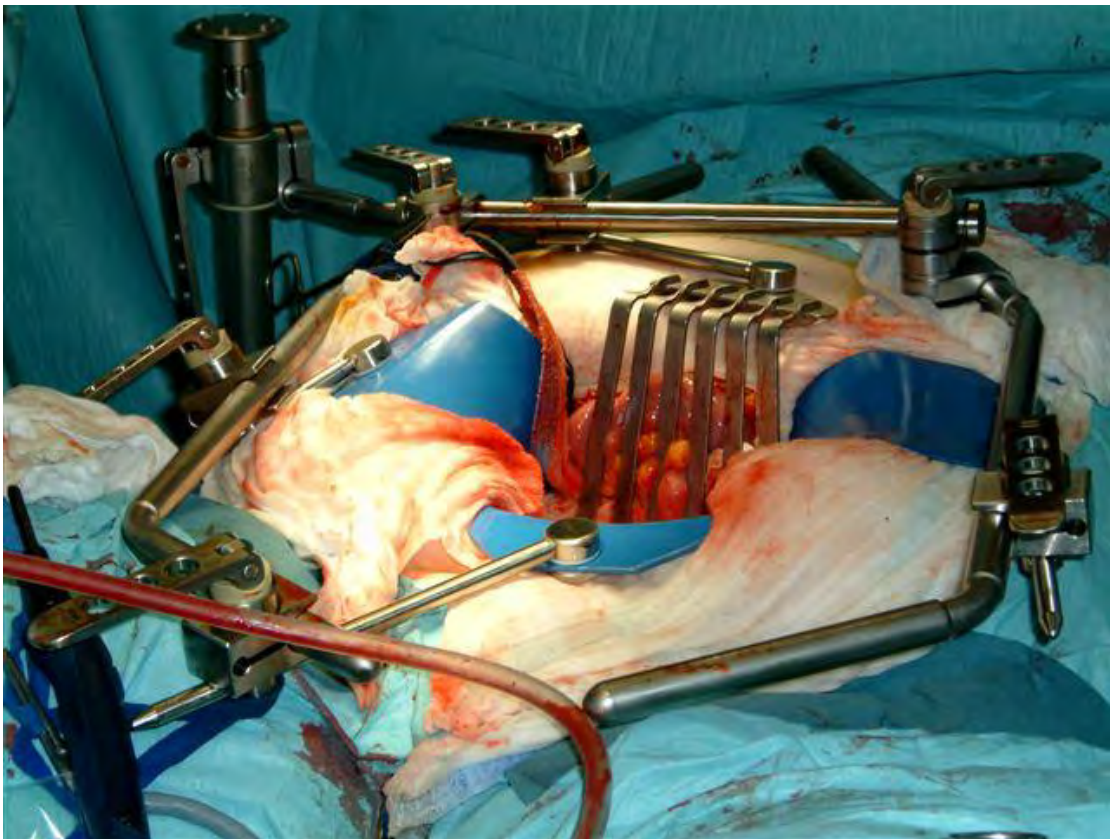


- Bladeholder with articulating bladeholder

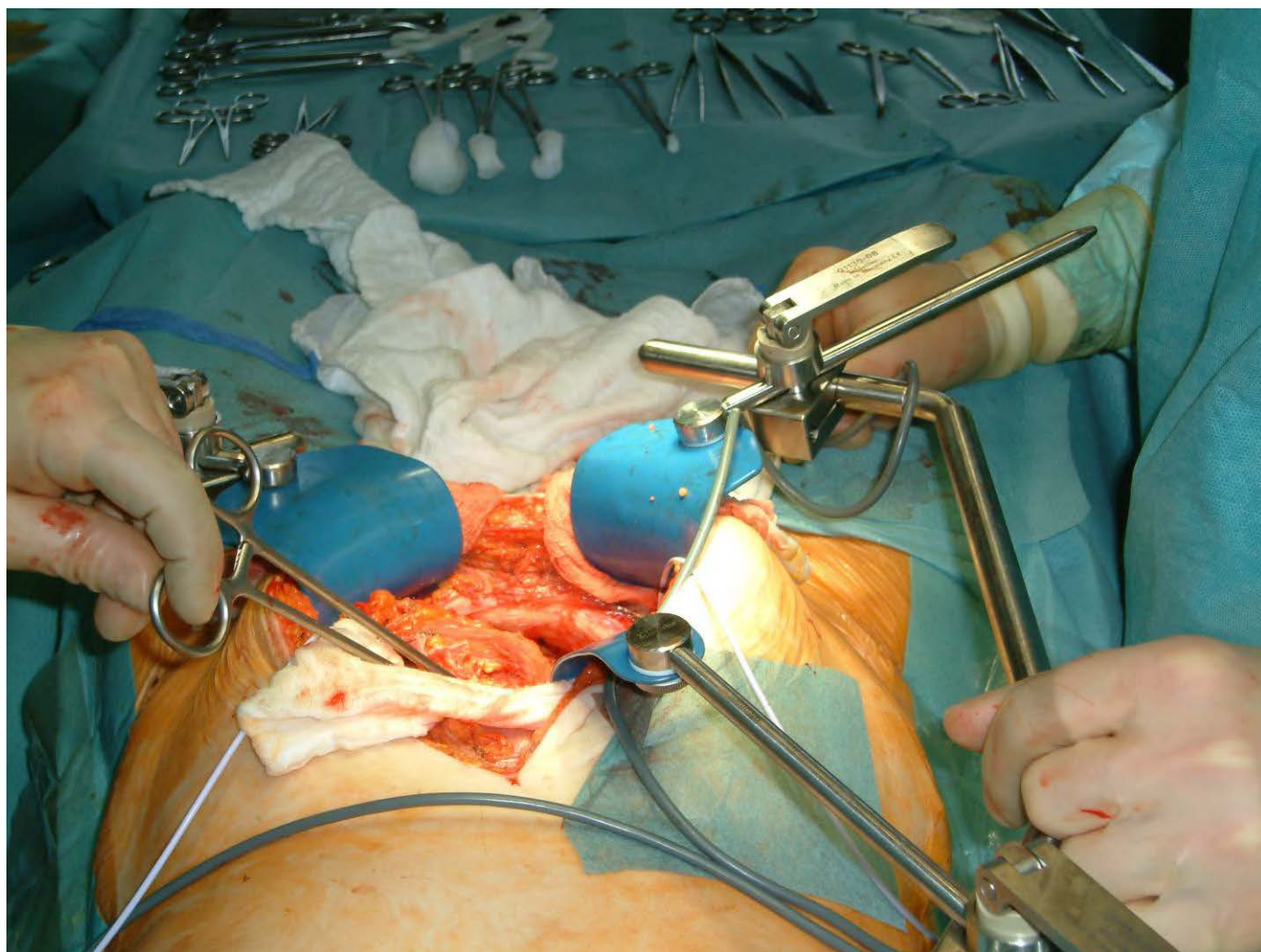


for a special situs adjustment in the deep

Any operation pictures:







Printed in Germany – Copyright 2006 by MTSattler.